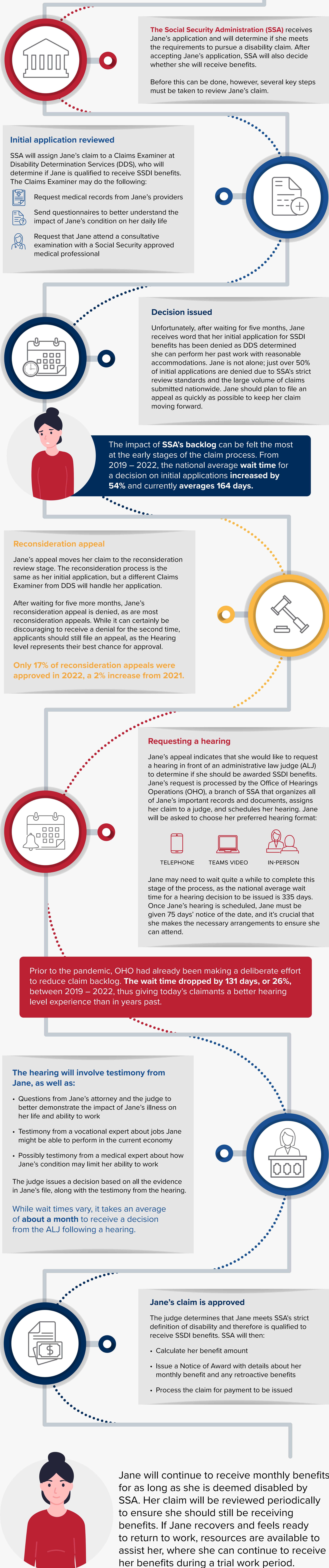


# Behind the scenes at Social Security

## THE JOURNEY OF SSDI APPLICATIONS TODAY

Jane has filed an application for Social Security disability insurance (SSDI) benefits after being out of work for over a year due to a severe illness. Hoping to replace some of her income, Jane applied for SSDI. While every SSDI claim is different and each applicant's experience is unique, here is one potential path that Jane's claim could take after being filed.



Sources: \*<https://www.ssa.gov/disability/data/ssa-sa-mowl.htm#Index>

**Have questions? We can help.**

Call toll-free: (877) 261-1947

bbabsence.com



**Brown & Brown**  
INSURANCE®

ABSENCE SERVICES GROUP